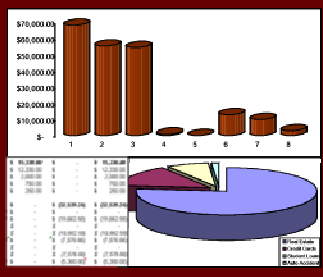


## Week 3: Probability and Statistics

- ✓ Quiz:  
In general, probabilities refer to events in the future, and statistics refer to events in the past. Give two examples of activities, jobs, or businesses that rely heavily on each and briefly explain why.
- ✓ Quiz for next week:  
When should you use a deterministic approach to solve business problems? When should you use a stochastic approach?
- ✓ Assignments due this week:
  - Biography: Leonhard Euler
  - Paper: "Normal Distribution"
  - Spreadsheet: Features
- ✓ Assignments due next week:
  - Biography: Henry Gantt
  - Paper: "Deterministic Processes versus Stochastic Processes"
  - Spreadsheet: We want to start our own lottery business. We need to decide how many numbers to use in our drawing. To help us understand the odds, create a spreadsheet that compares the probability of a player picking the winning numbers if we use one, two, three, four, or five numbers in our lottery. Assume that each number drawn must be in the range from 0 to 9.
- ✓ Bayesian Decision Theory
  - Probabilities
  - Distributions
- ✓ Probabilities
  - A probability is a numerical statement about the likelihood that an event will occur.
  - The probability that an event will occur is a number between zero and one.
    - An event with a probability of zero is not expected to occur.
    - An event with a probability of one is certain to occur.

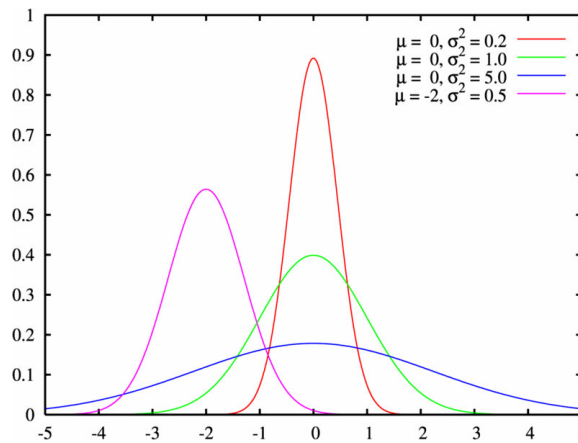






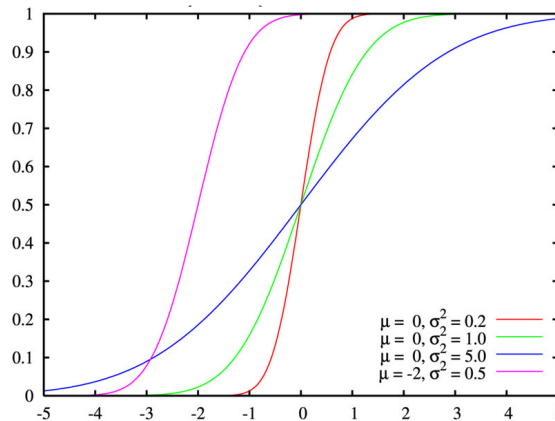
- ✓ Distributions (Used for both Statistics and Probabilities)
  - Normal Distribution Curve
    - Also called Gaussian distribution
    - 68% of events fall within one standard deviation
    - 95% of events fall within two standard deviations
    - Distribution function is the “bell curve”

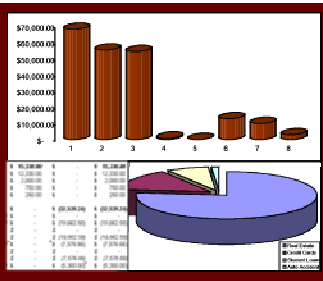
$$f(x; \mu, \sigma) = \frac{1}{\sigma\sqrt{2\pi}} \exp\left(-\frac{(x - \mu)^2}{2\sigma^2}\right)$$



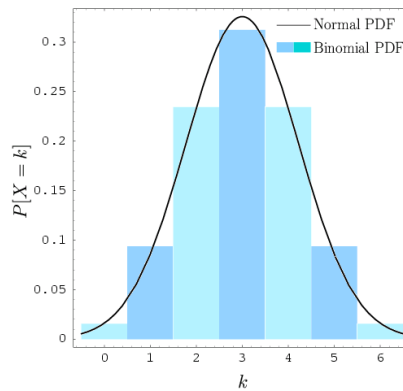
- Cumulative distribution function is an “S-curve”

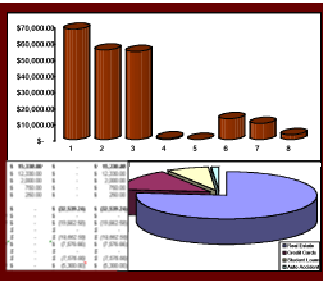
$$F(x; \mu, \sigma) = \frac{1}{\sigma\sqrt{2\pi}} \int_{-\infty}^x \exp\left(-\frac{(u - \mu)^2}{2\sigma^2}\right) du$$



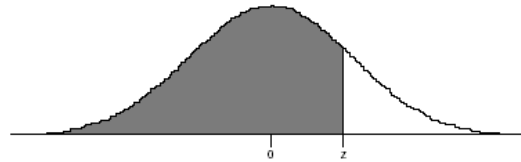


- Mean ( $\mu$ )
  - The mean, or average, tells you where the peak is located. It answers the question, “What value is at the middle of the distribution?”
- Standard Deviation (SD) ( $\sigma$ )
  - The standard deviation describes the shape of the bell curve. It answers the question, “How wide is the bell?”
- Binomial Distribution (Bernoulli Distribution)
  - Give the number of successes given a number of trials. There are only two possible outcomes of the trial – success or failure – hence the name “binomial.”
- The more trials, the closer it comes to a Normal Distribution





- Normal Curve Table
  - Old fashioned, textbook way of calculating probability distributions. Today you can do this much more easily with Excel.



Normal Deviate z	.00	.01	.02	.03	.04	.05	.06	.07	.08	.09
-4.0	.0000	.0000	.0000	.0000	.0000	.0000	.0000	.0000	.0000	.0000
-3.9	.0000	.0000	.0000	.0000	.0000	.0000	.0000	.0000	.0000	.0000
-3.8	.0000	.0000	.0000	.0000	.0000	.0000	.0000	.0000	.0000	.0000
-3.7	.0001	.0001	.0000	.0000	.0000	.0000	.0000	.0000	.0000	.0000
-3.6	.0002	.0002	.0001	.0001	.0001	.0001	.0001	.0001	.0001	.0001
-3.5	.0002	.0002	.0002	.0002	.0002	.0002	.0002	.0002	.0002	.0002
-3.4	.0003	.0003	.0003	.0003	.0003	.0003	.0003	.0003	.0003	.0002
-3.3	.0005	.0005	.0005	.0004	.0004	.0004	.0004	.0004	.0004	.0003
-3.2	.0007	.0007	.0006	.0006	.0006	.0006	.0006	.0005	.0005	.0005
-3.1	.0010	.0009	.0009	.0009	.0008	.0008	.0008	.0008	.0007	.0007
-3.0	.0013	.0013	.0013	.0012	.0012	.0011	.0011	.0011	.0010	.0010
-2.9	.0019	.0018	.0018	.0017	.0016	.0016	.0015	.0015	.0014	.0014
-2.8	.0026	.0025	.0024	.0023	.0023	.0022	.0021	.0021	.0020	.0019
-2.7	.0035	.0034	.0033	.0032	.0031	.0030	.0029	.0028	.0027	.0026
-2.6	.0047	.0045	.0044	.0043	.0041	.0040	.0039	.0038	.0037	.0036
-2.5	.0062	.0060	.0059	.0057	.0055	.0054	.0052	.0051	.0049	.0048
-2.4	.0082	.0080	.0078	.0075	.0073	.0071	.0069	.0068	.0066	.0064
-2.3	.0107	.0104	.0102	.0099	.0096	.0094	.0091	.0089	.0087	.0084
-2.2	.0139	.0136	.0132	.0129	.0125	.0122	.0119	.0116	.0113	.0110
-2.1	.0179	.0174	.0170	.0166	.0162	.0158	.0154	.0150	.0146	.0143
-2.0	.0228	.0222	.0217	.0212	.0207	.0202	.0197	.0192	.0188	.0183
-1.9	.0287	.0281	.0274	.0268	.0262	.0256	.0250	.0244	.0239	.0233
-1.8	.0359	.0351	.0344	.0336	.0329	.0322	.0314	.0307	.0301	.0294
-1.7	.0446	.0436	.0427	.0418	.0409	.0401	.0392	.0384	.0375	.0367
-1.6	.0548	.0537	.0526	.0516	.0505	.0495	.0485	.0475	.0465	.0455
-1.5	.0668	.0655	.0643	.0630	.0618	.0606	.0594	.0582	.0571	.0559
-1.4	.0808	.0793	.0778	.0764	.0749	.0735	.0721	.0708	.0694	.0681
-1.3	.0968	.0951	.0934	.0918	.0901	.0885	.0869	.0853	.0838	.0823
-1.2	.1151	.1131	.1112	.1093	.1075	.1056	.1038	.1020	.1003	.0985
-1.1	.1357	.1335	.1314	.1292	.1271	.1251	.1230	.1210	.1190	.1170
-1.0	.1587	.1562	.1539	.1515	.1492	.1469	.1446	.1423	.1401	.1379
-0.9	.1841	.1814	.1788	.1762	.1736	.1711	.1685	.1660	.1635	.1611
-0.8	.2119	.2090	.2061	.2033	.2005	.1977	.1949	.1922	.1894	.1867
-0.7	.2420	.2389	.2358	.2327	.2296	.2266	.2236	.2206	.2177	.2148
-0.6	.2743	.2709	.2676	.2643	.2611	.2578	.2546	.2514	.2483	.2451
-0.5	.3085	.3050	.3015	.2981	.2946	.2912	.2877	.2843	.2810	.2776
-0.4	.3446	.3409	.3372	.3336	.3300	.3264	.3228	.3192	.3156	.3121
-0.3	.3821	.3783	.3745	.3707	.3669	.3632	.3594	.3557	.3520	.3483